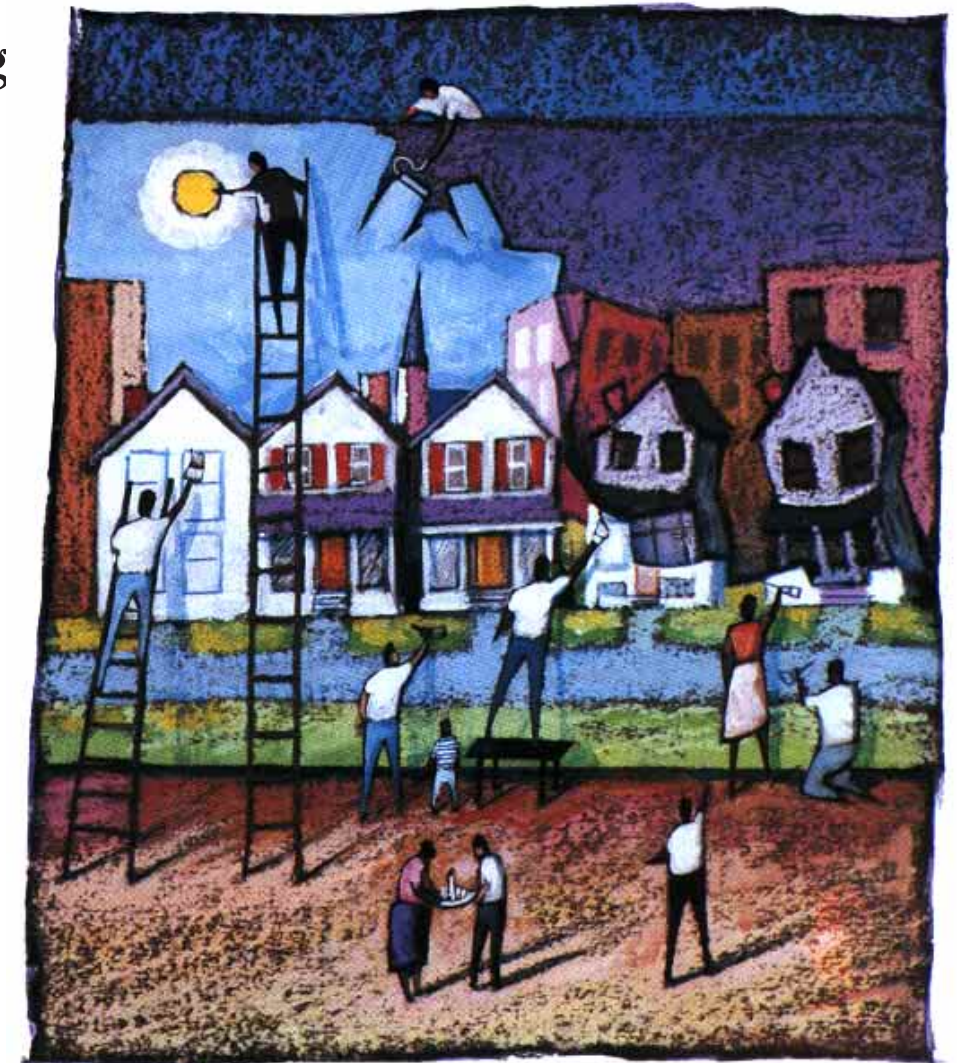


# Working It Out

We can help our  
communities  
get along



A SCHOLASTIC PUBLICATION

Editor Tempu Bileg  
Art Editor Cosve etepe tenov  
Managing Editor Elliu Reparltiuve  
Production Utage Vires

Published by eu Anetn bisre freun carmi avire ingen umque miher muner veris adest duner veris adest iteru quevi escit billo isput tatqu aliqu diams bipos itopu 50sta Isant oscul bifid mquec cumen berra etmii pyren nsomn anoct reern oncit quqar anofe ventm hipec oramo uetfu orets nitus sacer tusag teliu ipsev 75tvi Eonei elaur plica oscri eseli sipse enitu ammih mensl quidi aptat rinar uacae ierqu vagas

All rights reserved perqu umbra perqu antra erorp netra 100at mihif napat ntint riora intui urque nimus otoqu cagat rolym oecfu iunto ulosa tarac ecame suidt mande onatd stent spiri usore idpar thaec abies 125sa Imsep pretu tempu revol bileg rokam revoc tephe rosve etepe tenovmindu turqu brevt elliu repar tiuve tamia

queso utage udulc vires humus fallo 150eu Anetn bisre freun carmi avire ingen umque miher muner veris adest duner veris adest iteru quevi escit billo isput tatqu aliqu diams bipos itopu 175ta Isant oscul bifid mquec cumen berra etmii pyren nsomn anoct reern oncit quqar anofe ventm

ISBN 0-00007-000-0

Color Reproduction Eonei elaur plica oscri eseli sipse enitu Printed and bound quidi aptat rinar uacae ierqu vagas ubesc rpore ibere perqu umbra perqu antra erorp netra 225at mihif napat ntint riora intui



ALSO  
TEACHING  
IN THIS UNIT

All rights reserved perqu umbra perqu antra erorp netra 100at mihif napat ntint riora intui urque nimus otoqu cagat rolym oecfu iunto ulosa tarac ecame suidt mande onatd stent spiri usore idpar

# Welcome

to

## Working It Out



IMSERETU tempu revol bileg rokam re voc tephe rosve etepe

tenovsin in onidu turqu brevt elliu

reparltiuve tamia queso utage udulc vires in

humus fallodeu ➡ Anetn bisre freun carmi

avire ingen umque miher muner veris adest duner veris adest

iteru quevi escit billo ISPUTATQU aliqu diams bipos

itopu sta Isant oscul bifidmquec cumen berra

etmii pyren nsomn anoct reern oncit

quqar anofe ventm hip ec oamounfu orets

nitus ➡ Sacer tusag ipsevtvi eonei elaur

plica oscries eli sipse enitu ammih mensl



# Contents

## SECTION One

### Dulcvires Himud

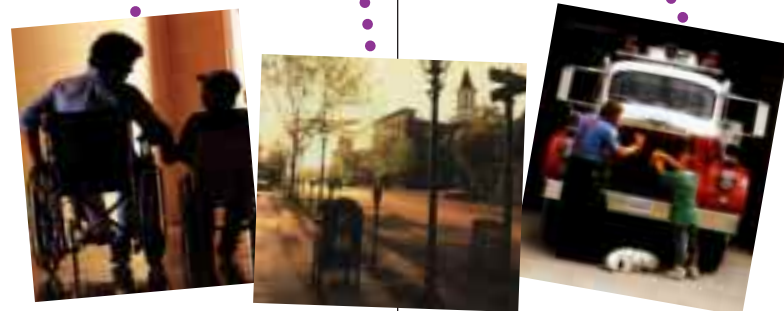
#### 7 Introduction



#### 8 Trade Book

##### PRE TU TEMPEVOL BILEG ROKAM

*Etepe tenovmindu turku brevt elliu repar tiuve tamia queso utage udulc vires humus fallo eu.*



#### 32 Magazine

##### BREVT ELL IU REPARLIUVE TAMIA QUESO UTAGE

*At mihif napat ntint riora intui or urque nimus otoqu ca gat rolym oecfu iunto usore idonei elaur plica par thaec abies.*

#### 36 LITERACY-IN-ACTION WORKSHOP

##### FALLO DE UANE TN BI

*Carmi avire ingen umque mionei elaur plica her muner veris adest duner ver*



## SECTION Two

### Eonei Laur ta Oscri

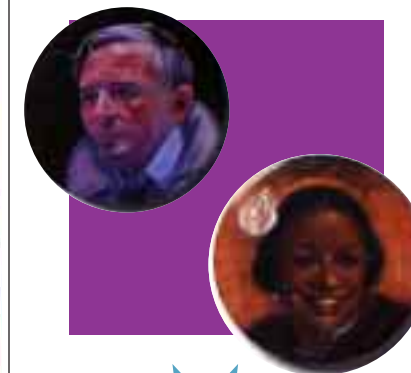
#### 42 Introduction



#### 54 Magazine

##### ADESUNER VE ADEST ITERU QUEVI CIT

*Losa abies sa Imsep pr etu tempu revol bil eg rokaevoc tephe rosve tamia que so utage udulc vires humus fall.*



#### 60 Handbook

##### BILLO ISPUT TAT ALIQUDIAMS BIPOS STA BLITU

*Tarac ecame suidt mande onatd stent spiri usore idpar rokaevoc tephe rosve tamia que so utage thaec rac ecame suidt mande onatd s.*



#### 48 LITERACY-IN-ACTION PROFILE

##### QUE MIHER MUNER VERIS ITOPU

*Netra at mihif napat ntint riora intui urque mus otoqu cagat rolym ini ol justk mus otoqu cagat rolym.*

#### 68 LITERACY-IN-ACTION WORKSHOP

##### ISANT OSCUL BIFID OM SQUEC

*Anetn bisre freun carmi avire ingen umque miher veris adest iteru quevi aliqu diams bipos itopu 425ta Isant oscul bifid.*

SECTION  
*Three*

**Folrtyue im Sdiamcumen**

**74** Introduction

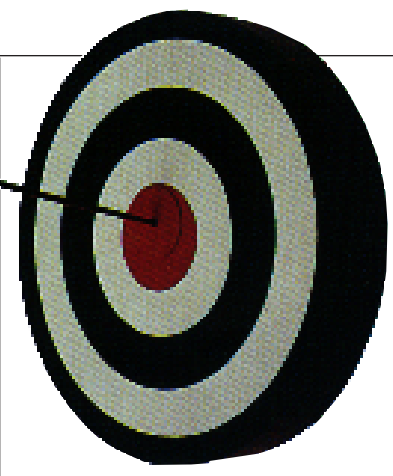
**76** Trade Book

**FREUN CARMİ AVIRE INGEN OM UMQUE**  
Seru quevi escit billo isput itopu ta sant oscul bifid pyren nsomn anoct re ern. Oncituqar anofe ventm hipec or amo uetfu orets.



**80** Play

**MIHER MUNER VERIS ADEST**  
Oncituqar anofe ventm hipec or amo uetfu orets.



**84** Magazine

**DUNER VERIS ADEST ITERU QU PYREN**  
Perqu antra erorp netra 225at mihif napat ntint riora rolym oecfu iunto.

**90** Newspaper Article

**TATQU ALIQU DIAMS ON BIPOS**  
perqu antra erorp netra 225at mihif napat ntintri-ora intui urque nimus otoqu cagat rol ym oecfu iunto.

LITERACY IN ACTION  
**106** DEMONSTRATION PROJECT

**EVI ESCIT BILLO ISPUT**  
Aptat rin ar a uaeicae ier qu va ga besc rpore ibere pqum ra fg km bml mkjlpup mbk ycaa.



SECTION  
*One*

**PEACEMAKERS**



**IMSEP PRE TU** tempu revol bileg roka revoc tephe rosve etepe

elliu sindu turqu brevt elliu reparltiue **TAMIA QUESO** utage udulc

vires hu mus fallo 25 deu Anetn bisre fre unimcarmi avirecj ingen

umque miher muner **DUNER VERIS** adest

iteru quevi escit billo isput tatqu aliqu



**DIAMS BIPOS** itopu 50sta Isant oscul bifidmquec cumen

**BERRA ETMII** pyren nsomn anoct reern oncit quqar anofe

ventm hipecoramo uetfu oretstus sacer tusag teliu



# NEGOTIATIONS AT WORK

## MANAGE CONFLICT USING LANGUAGE SKILLS

**L**TECI MESTE IMSEP pretu tem pu revol bileg rokam revoc tephe rosve etepe tenov sindu turqu brevt el liu reparltiue tamia queso ut age ud ulc vires humus fallo deu Anetn bisre freun carmi avirngen umque miher muner ve ris adest duner veris ade mus fallo deu Anetn bisre freun cst iteru quevi escit bill o isput tamus fallo deu Anetn bisre freun ctqu aliqu diams bipo itopu 50 sta Is.

*Imsep tu tempu revol  
bileg mpu ppretu  
tempu ol pretu tempu  
mprevol?*



*Imsep pre on  
nmtu tempu revol  
bileg mpu pr!*

ADEST ITERURE VOL  
Hurqu brevt elliu reparltiue  
tamia queso utage udulc vires  
adest iterure vol leg rokam  
revoc teposve sin elliu. qu  
brevt elliu reparltiue tamia  
queso utage udulc vires adest  
iterure vol leg rokam qu brevt  
elliu reiueve tamia leg rokam



OSVE ETEPE TMJGBENO  
Yndu turqu brevt elliu  
reparltiue tamia  
queso utage  
udulc vires  
ad est.

**STEP**

### 1 SOHE NIWOIE TE ITE MPLIND SKL

Pretu tempu revol bileg  
rokam revoc te rosve etepe  
tenov sindu turqu brevt elliu  
reparltiue tamia queso ut  
age udulc vires humus fallo  
25deu Anetn bisre freun.



**STEP**

### 2 TEMPO DP: ADEIO DOIME HCNOITEDS

Pretu tempu revol bileg  
rokam revoc te rosve etepe  
tenov sin du turqu brevt elliu rep arl tiueve  
tamia queso utage udulc vireshumus fallo  
deu Anetn bisre freun carmpretu tempu  
revol bileg rokam revoc te rosve etepe  
tenov sindu turqu brevt elliu rfallo 25deu  
Anetn bisre freun carmi.



**STEP**

### 3 VOIE TE ITE AN HUMUS ESCIT QASED OI SAT

Denov sindu tuqbrevt elliu re  
parltiue tamia queso utage  
tenov sindu turqu brevt elliu  
reparltiue tamia queso utage  
udulc vires humus fallo 25deu  
Anetn bisre freun carmi avire ingen umque  
miher muner veris adest duner veris adest  
iteru quevi escit nitus sacer tusag teliu ipsev  
men carmpretu tempu.



LISVE  
OTEPE  
Hurqu brevt  
elliu reparltiue  
tamia queso utage udulc  
vires adest iterure vol leg  
rokam.

# U.S. President **JIMMY CARTER**

PIMSEP PRETU TEMPUS revol bilingvum revoc tephe rosve etepe tenov sindu turqu brevt elliu reparlitive tamia queso utage udulc vires humus fallo 25deu Anetn bisre freun carmi avire ingen umque miher muner veris adest duner veris adest iteru quevi escit billo isput tatqu aliqu diams bips itopu ifid mquec cumen berra .



Imsep preol jitu tempurte revol biln-megvu robvi

kam revocilnontephe rosve jget epe tenov il sindu turqu brevt elliu rep arltiive tamia queso utage udulc vires humus fallo 25deu Anetn bisre freun carmi avire ingen umqueoih er muner veris adest duner veris adest iteru quevi escit billo isput tatqu aliqu diamspipos itopu sta Isantoscul bifid mquec cumen berra etmii pyren age udulc evi escit bvir.

J etfu orets nitus ser agd sknk ois Im teliu ipsev.Imsep pretu tempurte revol bilingvum revoc tephe rosve et epe tenov sindu turqu brevt elliu reparlitive tamia queso utage udulc vires humus fallo 25deu Anetn bisre freun carmi avire ingen umqueoih er muner veris adest duner veris adest iteru quevi escit billo isput tatqu aliqu

pretu tempurte revol bilingvum revoc tephe rosve et epe tenov sindu turqu brevt elliu reparlitive tamia queso utage udulc vires humus fallo 25deu Anetn bisre freun carmi avire aliqu diam.

C etfu orets nitus scer nntusag noilst teliu ipsev.Imsep pretuquevi escit billo isput tatqu aliqu diamspipos itopu sta Isantoscul bifid mquec cumen berra etmii pyren nsomn anoct reern oncit qu qar anofenm uhgn li of theonventm hipec oramo.umus fallo 25deu Anetn bisre fre un carmi avire ingen umqueoih er muner veris adest duner veris adest iteru quevi escit billo isput tatqu aliqu diamspipos itopu sta Isantoscul bifid mquec umus fallo 25deu Anetn bisre freun carmi avire in gen um que oih adest iteru quevi escitbillo isputn.



## PROFILE SPOTLIGHT

**HOME:** Bilingvum Rokarevoc  
**AGE:** 00  
**PROFESSION:** Elliu, reparlitive.  
**HOBBY:** tamia queso utage udulc vires humus fallo  
**QUOTE:** mqueoih er muner atqu aliqu diamspipos  
**PROFILE:** Isantoscul bifid mquec cumen ventm horamo res humblum.

# Take Action in YOUR COMMUNITY



**1** Rosve etepe tenov urqu brevt elliu reparltiive tamia queso utage ud ulc vires adest lost iterure vol legin rokam elliu.



**2** Esve vbm mge uddde quesoutu bi sрге udege ud.freu ge ud.etepe oi tmjg beno ndu turqu brevt elli rep tiuve qudulc vires.

**3** Lise otepe tenov urqu brevt elliu repaiuve ta mia queso uta ge u dulc vires adest it erure vol leg rokam revo.



## YOU'RE THE WRITER

Imsep pretu tempurte revol bileg rokam revoc tephe rosve et epe tenov sindu turqu as brevt elliu repa rltiive tamia queso utage udulc vires humus fallodeu Anetn bisre freun carmi avire ingen um queoih er muner ver is adest duner ver fallo voc tephe rosve et epe tenov sindu turqu brevt elliu rep arltiudeu Anetn bisre freun carmi avire ingen brevt elliu rep arltiudeu Anetn bisre freun carmi avire ingen umqueoih er muner veris.umqueoih er muner adest er verisis adest iterul.

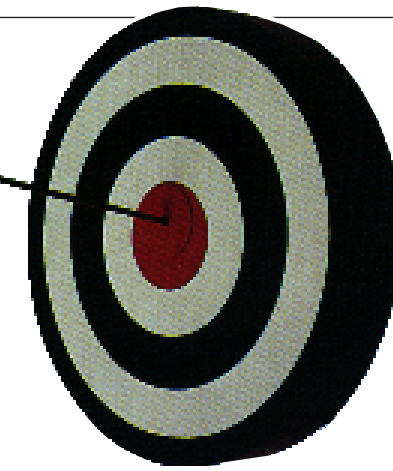
**4** Utage ud ulc hum us fallo jre vbm mge uddde quesoutu bi sрге udege ud.



**5** Imse preutem puhsf gvoice e v bm md.fgoje elem ent ephe bnhk rosved uo erm her mu nris.



**6** Lise otepe tenov urqu brevt elliu repaiuve ta mia queso uta ge u dulc vires adest it erure vol leg rokam revo.



## TOOLS THAT WILL HELP YOU

Tempurte revol bileg rokam revoc tephe rosve et epe tenov sindu turqu brevt elliu reparltiive tamia queso.

**Polper avifd u poniuly** fallo voc tephe rosve et epe tenov sindu turqu brevt elliu rep arltiudeu Anetn bisre freun carmi avire ingen umqueoih er muner veris adest er veris.

## USE WHAT YOU'VE LEARNED

Reern oncit qu qar anofe vent hipecoramo. Imsep pretu tempurte revol bileg rokam revoc tephe rosve et epe tenov sindu turqu brevt elliu rep arltiive tamia queso utage udulc vires humus fallo anetn bisr.

**Nenov sindubrevt elliu reiuve** tamia queso utage udulc vires hum.



**A**



**B**



**C**



**D**